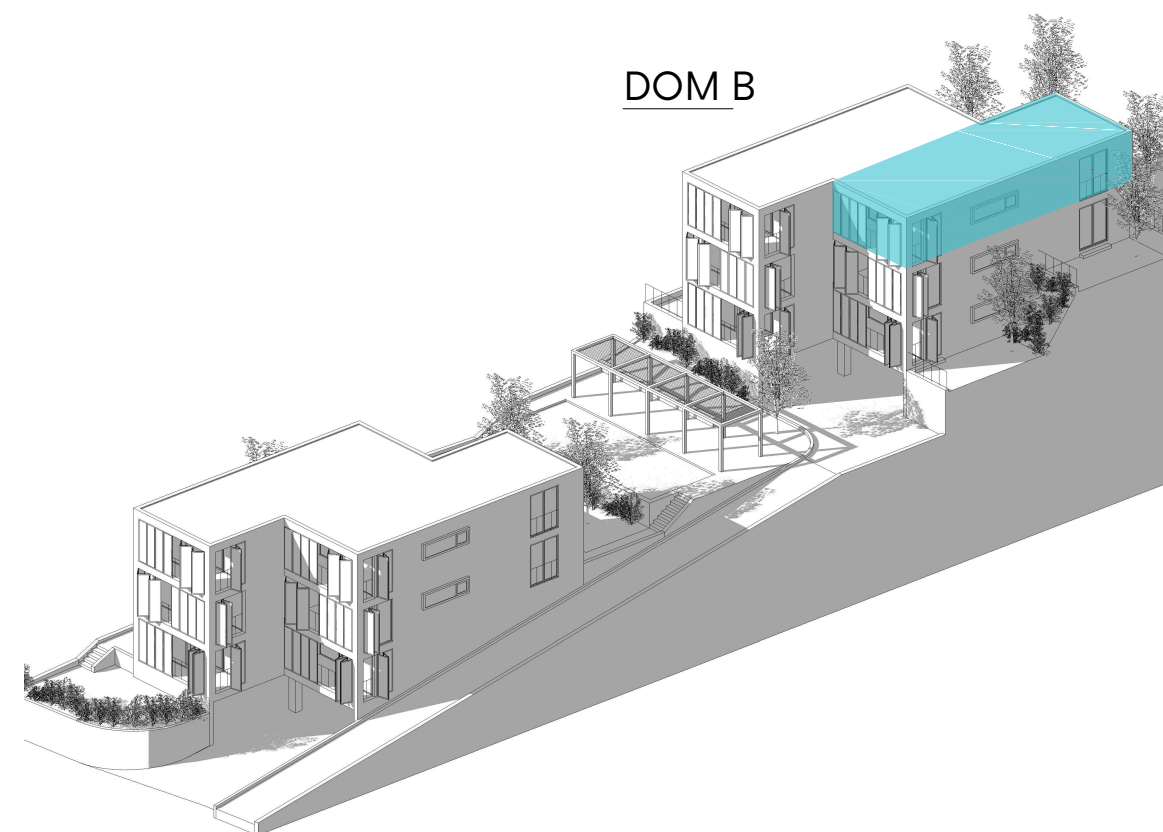


### APARTMÁN B6

CHODBA	4.56 m <sup>2</sup>
WC	1.35 m <sup>2</sup>
KUCHYŇA	4.68 m <sup>2</sup>
OBÝVAČKA / JEDÁLEŇ	29.56 m <sup>2</sup>
CHODBA	3.01 m <sup>2</sup>
SPÁLŇA	10.84 m <sup>2</sup>
SPÁLŇA	10.84 m <sup>2</sup>
KÚPELŇA	4.03 m <sup>2</sup>
<b>VNÚTORNÁ PLOCHA</b>	<b>68.87 m<sup>2</sup></b>
TERASA	9.52 m <sup>2</sup>

### DOM B



1:100

HOUSE B - APARTMENT B6

**ROGOZNICA**

ING. ARCH. ILJA SKOČEK\_MAY 2020