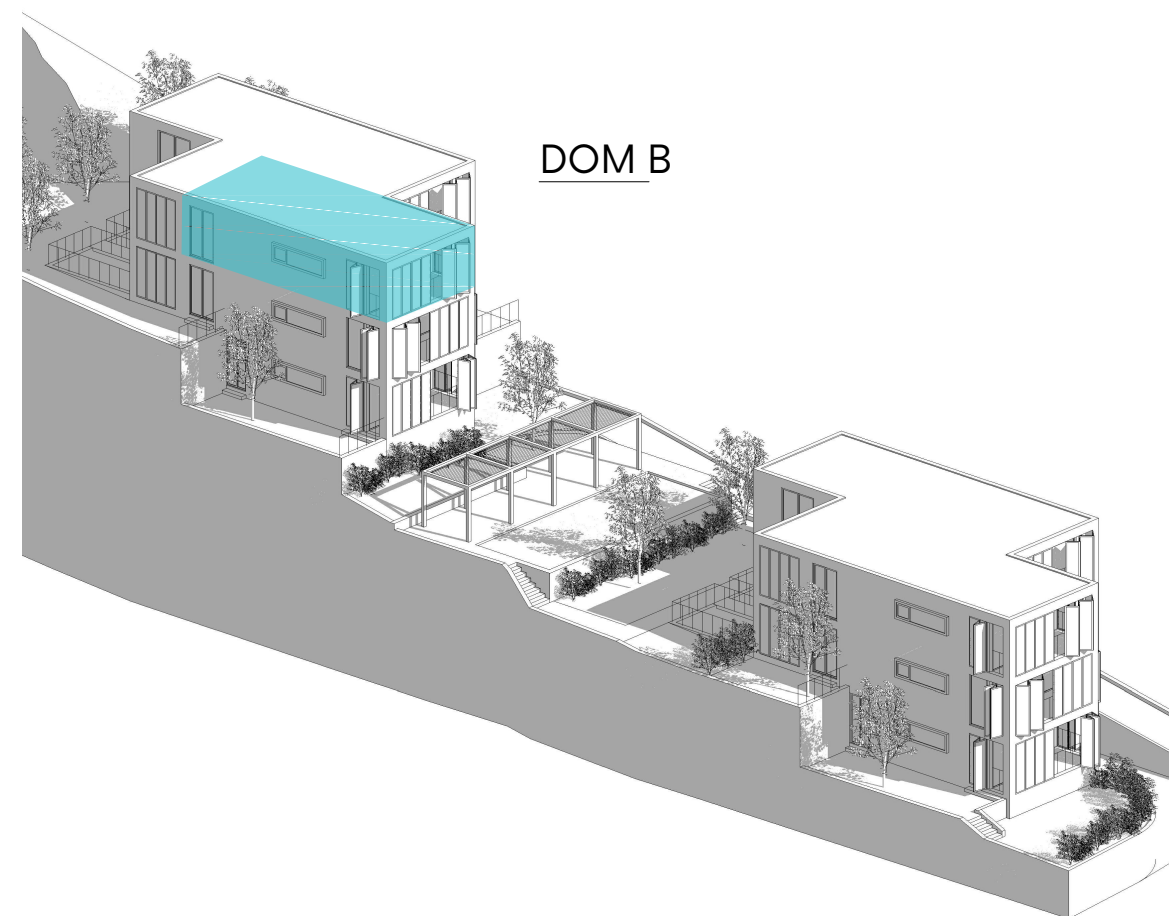


### APARTMÁN B5

CHODBA	6.63 m <sup>2</sup>
WC	1.31 m <sup>2</sup>
KUCHYŇA	4.68 m <sup>2</sup>
OBÝVAČKA / JEDÁLEŇ	26.14 m <sup>2</sup>
SPÁLŇA	11.66 m <sup>2</sup>
KÚPELŇA	2.82 m <sup>2</sup>
VNÚTORNÁ PLOCHA	53.24 m <sup>2</sup>
TERASA	9.94 m <sup>2</sup>



1:100

HOUSE B - APARTMENT B5

**ROGOZNICA**

ING. ARCH. ILJA SKOČEK\_MAY 2020