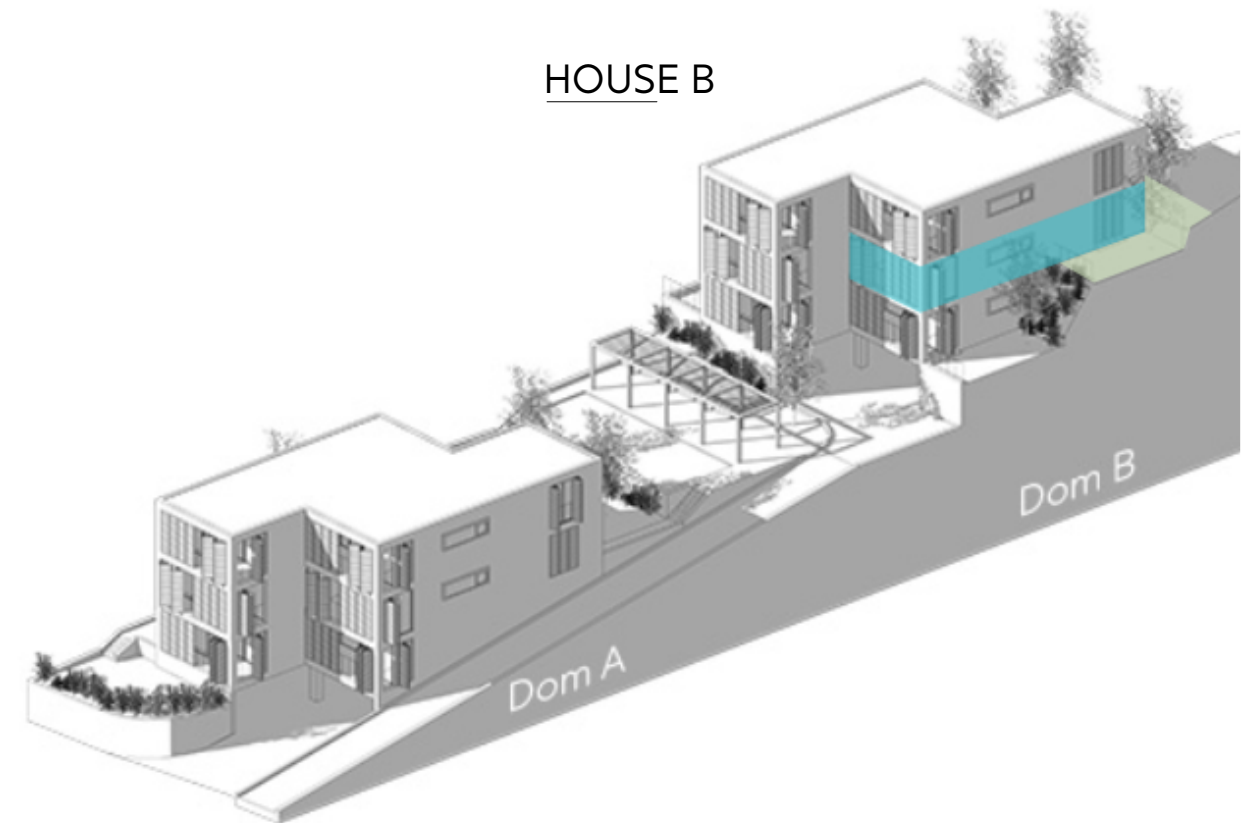


APARTMENT B4

HALLWAY	4.56 m ²
WC	1.35 m ²
KITCHEN	4.68 m ²
LIVING / DINING ROOM	29.56 m ²
CORRIDOR	3.01 m ²
BEDROOM	10.84 m ²
BEDROOM	10.84 m ²
BATHROOM	4.03 m ²
TOTAL USABLE AREA	68.87 m ²
TERRACE	9.52 m ²
GARDEN	56.83 m ²

HOUSE B



1:100

HOUSE B - APARTMENT B4

ROGOZNICA

ING. ARCH. ILJA SKOČEK_MAY 2020