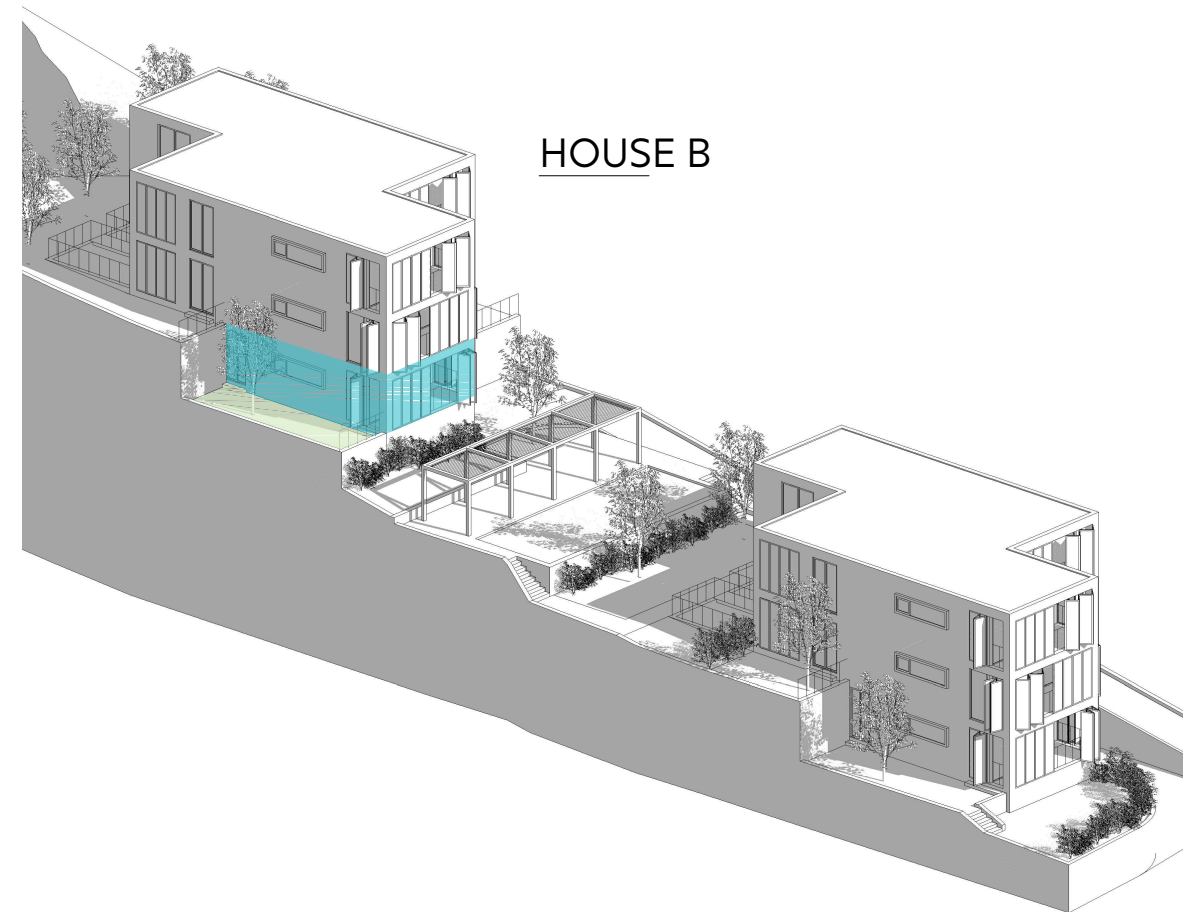


### APARTMENT B1

HALLWAY	6.63 m <sup>2</sup>
WC	1.31 m <sup>2</sup>
KITCHEN	4.68 m <sup>2</sup>
LIVING / DINING ROOM	26.14 m <sup>2</sup>
BEDROOM	11.66 m <sup>2</sup>
BATHROOM	2.82 m <sup>2</sup>
<b>TOTAL USABLE AREA</b>	<b>53.24 m<sup>2</sup></b>
TERRACE	9.94 m <sup>2</sup>
GARDEN	27.62 m <sup>2</sup>



### HOUSE B



1:100

HOUSE B - APARTMENT B1

**ROGOZNICA**

ING. ARCH. ILJA SKOČEK\_MAY 2020